

SIMPLY CUT EVERYTHING!



FOR INDUSTRIAL  
PRODUCTION

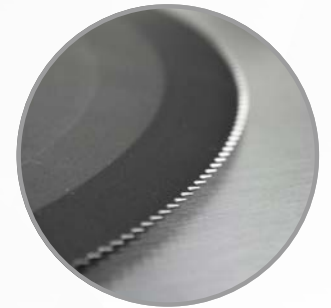
MHS PROFESSIONAL

**MHS**  
SCHNEIDETECHNIK GMBH



### ROUND BLADE MACHINE

Efficient machine with high-quality round blade for clean cuts.



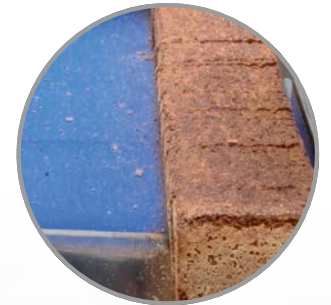
### 3 ADDITIONAL PROGRAM BUTTONS

3 quick-start buttons with the facility to save individual cutting programs.



### EFFICIENT

Automatic flap opening and optional flap start enable maximum slicing efficiency.



### QUICK AND HYGIENIC CLEANING

Hermetic encapsulation, discharge belt can be removed quickly and without the need for tools.





QUIET CUTTING



WARM BREAD



QUIET CUTTING



EASY TO CLEAN



ENERGY-SAVING

# MHS

SCHNEIDETECHNIK GMBH

## MHS PROFESSIONAL

With the MHS Professional you are well equipped for every instance. Be it plaits, stollen, cakes, bread and much more besides - the MHS Professional processes all this with ease. With an input length of up to 75 cm, you reduce your loading times and off cuts to a minimum.

- ▶ Slice thickness freely selectable in 0.5 mm steps
- ▶ 3 additional program memory buttons, freely programmable (slice thickness, speed, run-on time, return path)
- ▶ Function for cutting numbers of slices
- ▶ Function for dividing and half cutting
- ▶ Hygienic membrane keypad for simple operation
- ▶ Dividing function for cutting into equally-sized pieces
- ▶ Maximum slicing quality due to circular round blade cutting
- ▶ Oil-free cutting, even of warm bread
- ▶ Cutting speed adjustable to the product/working process
- ▶ Return path limiting (adjustable to the respective bread length)
- ▶ Automatic flap opening
- ▶ Automatic flap start (selectable)
- ▶ Powerful blade drive (1.5.kw) with frequency converter
- ▶ Automatic gripper (optionally available)
- ▶ Slice thickness up to 100 mm (optionally available)

## EFFICIENCY DUE TO:

- ▶ Minimal gripper remainder
- ▶ Extremely durable blade thanks to special coating and original MHS sharpening
- ▶ Intuitive, straightforward operation
- ▶ Particularly easy cleaning
- ▶ Low maintenance costs as particularly maintenance-friendly
- ▶ Drive with frequency converter protects the mechanical parts (soft start-up, soft stop)
- ▶ Up to 220 slices/min.

## MAXIMUM HYGIENE DUE TO:

- ▶ Stainless steel housing
- ▶ Removable front cover for easy cleaning of blades and the cutting chamber without having to move the machine
- ▶ Rear wall removable without tools for even easier cleaning of the back cutting chamber
- ▶ Functional parts easily accessible
- ▶ Blade cleaning position
- ▶ Hermetic encapsulation of the drive and electronics in the cutting chamber
- ▶ Discharge belt can be removed



VIDEO FOR MHS PROFESSIONAL AT [WWW.MHS-SCHNEIDETECHNIK.DE](http://WWW.MHS-SCHNEIDETECHNIK.DE)

# FOR ANYONE WHO WANTS MORE



HIGH EFFICIENCY



ROBUST



FLEXIBLE

**Dimensions (WxHxD):** (161) 260 x 114 x 86.5 cm

**Bread passage (LxHxD):** 75 x 14-16 x 35 cm

**Slice thicknesses:** 4 – 30 mm (on request up to 100 mm)

**Cutting capacity:** 80 – 220 slices/min.

**Weight:** 320 kg

FURTHER TECHNICAL DATA AND OVERVIEW OF MODELS ON PAGE 19